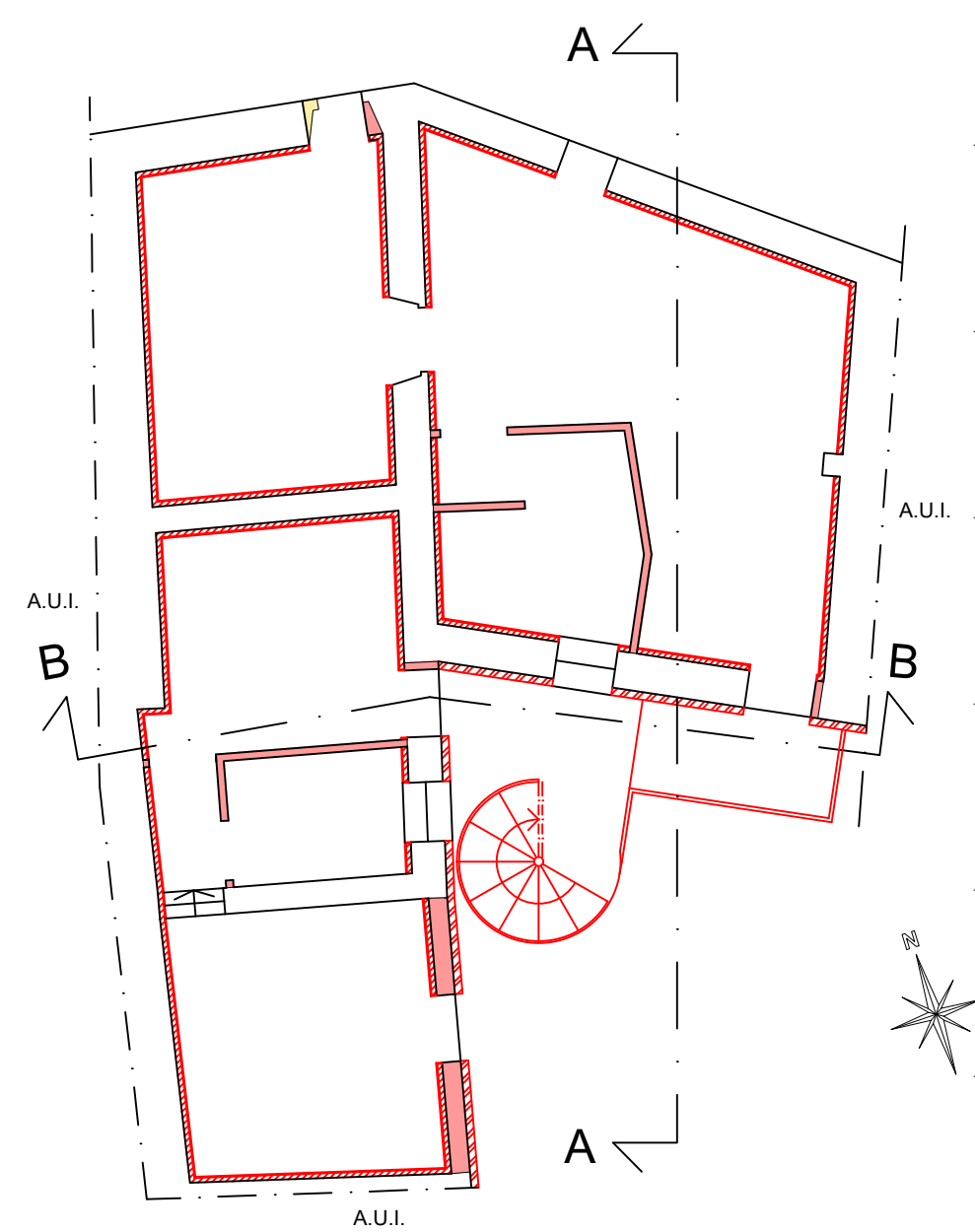
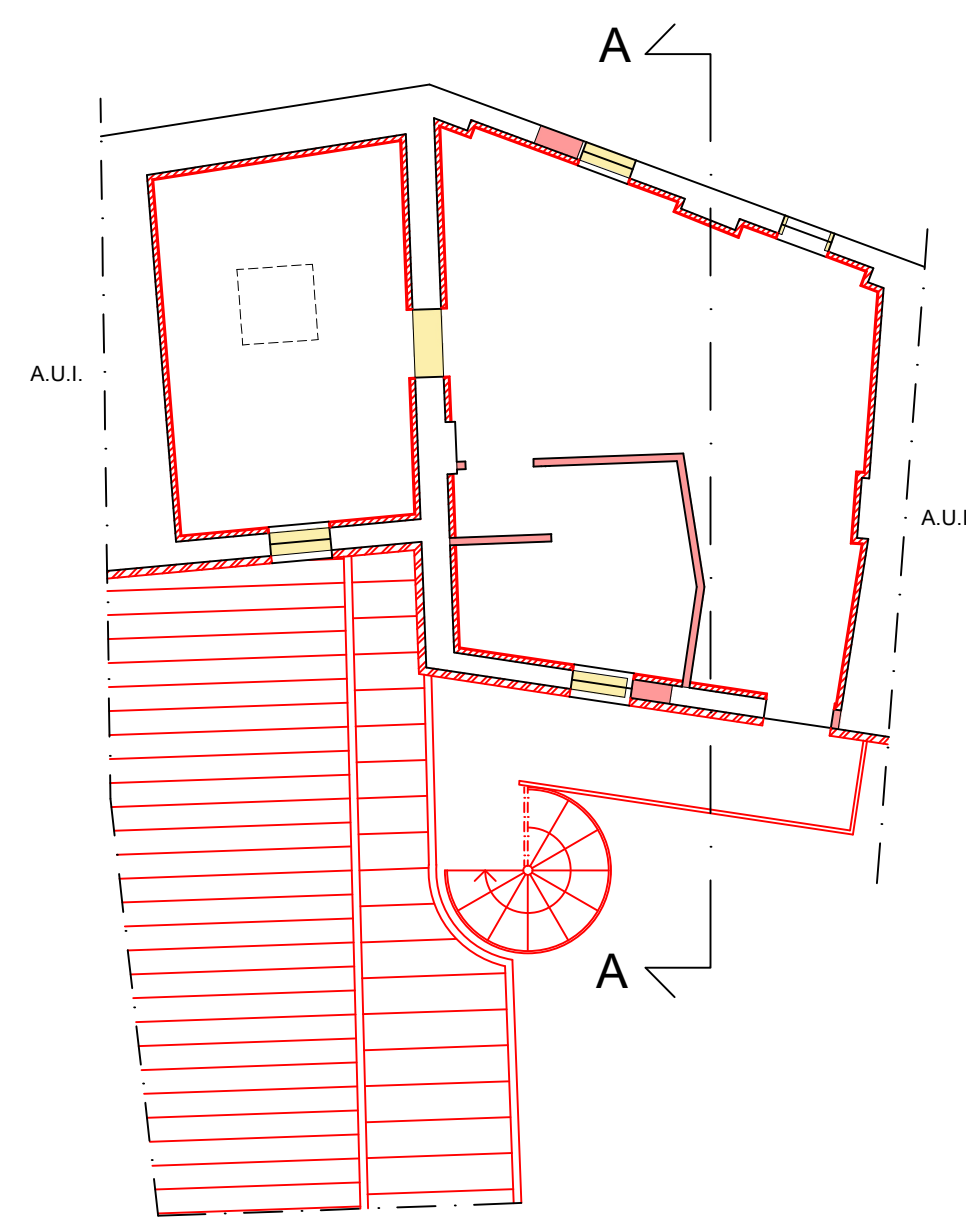


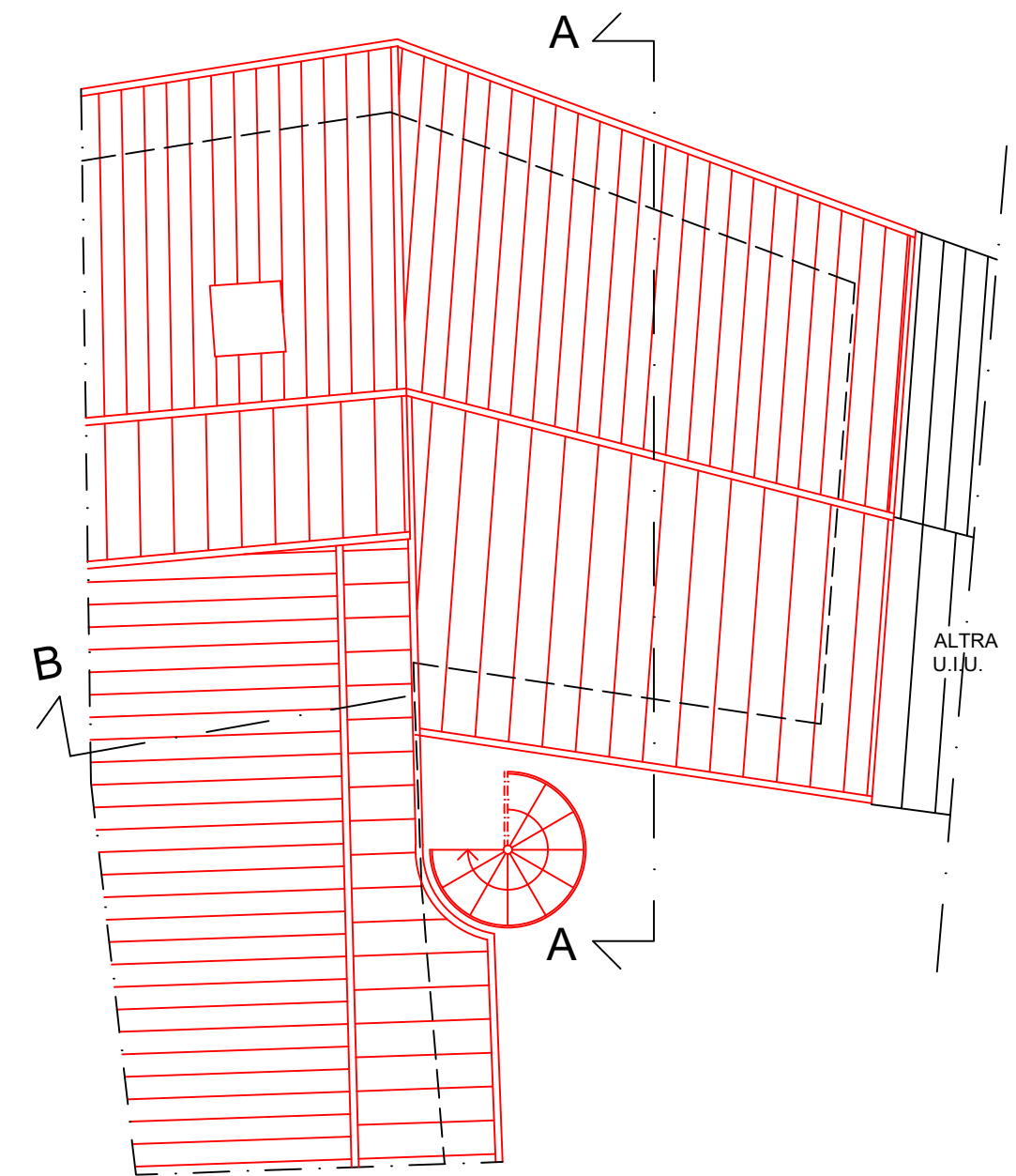
PIANO TERRENO



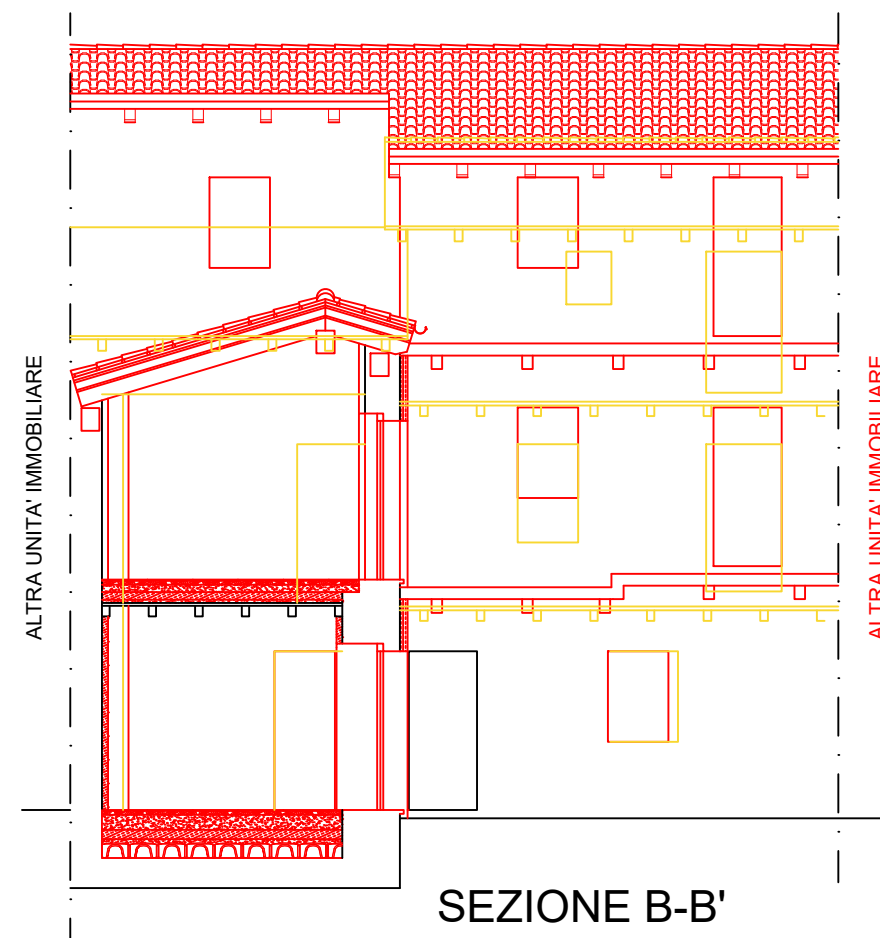
PIANO PRIMO



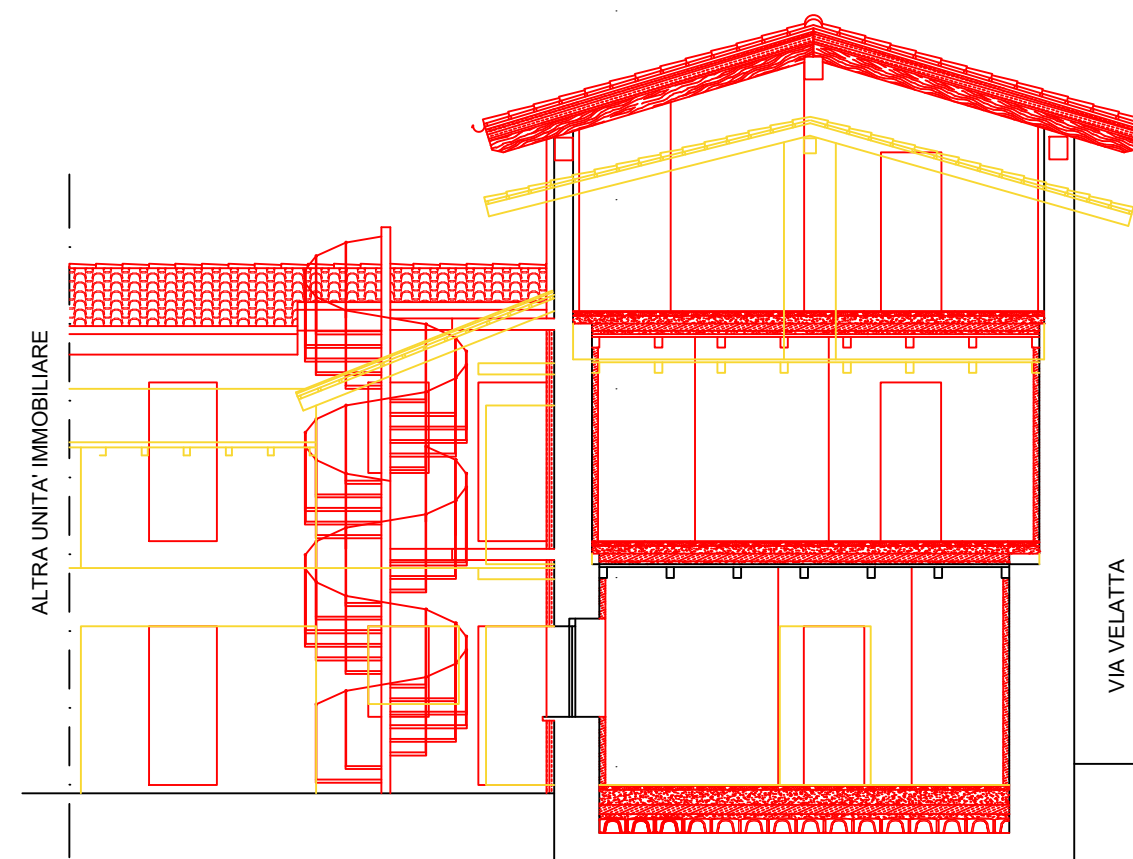
PIANO SECONDO



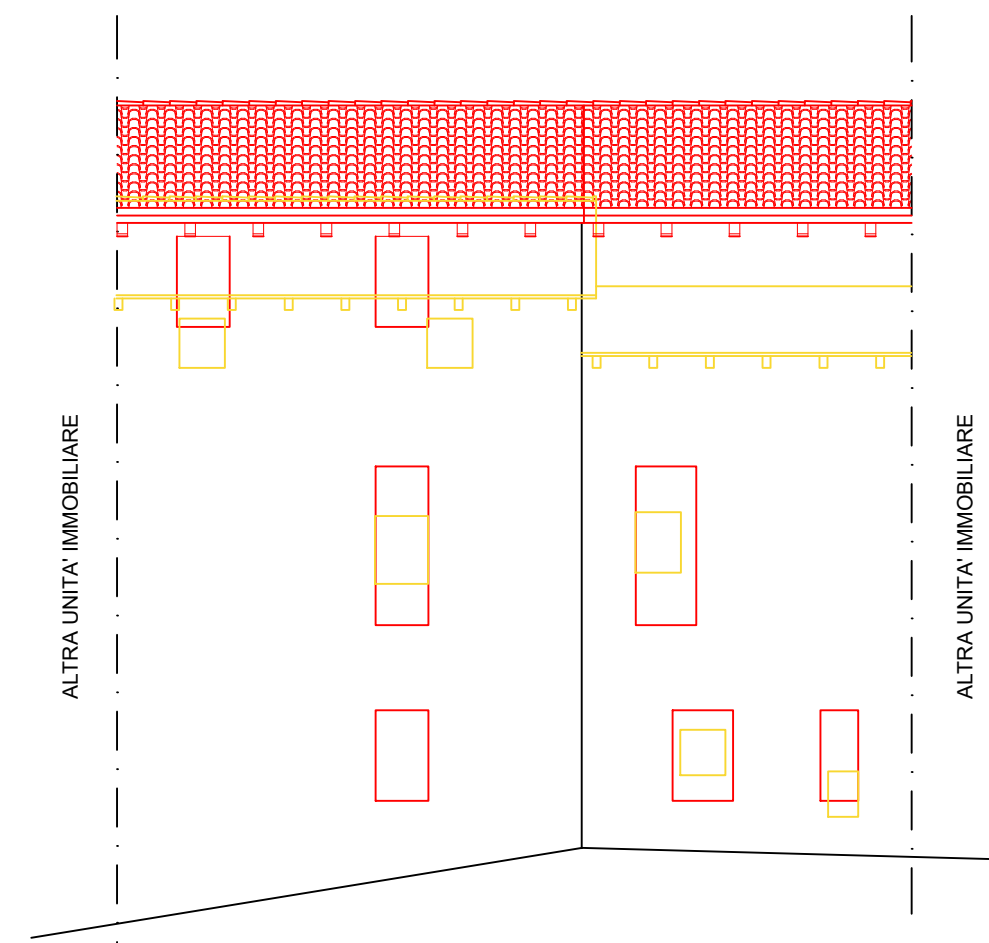
PIANTA della COPERTURA



SEZIONE B-B'



SEZIONE A-A'



PROSPETTO NORD

- DEMOLIZIONE
- NUOVA COSTRUZIONE

Fontaneto



MALI GENTI
MEZZOMERICO (NO)
VIA VALLETTA N°2
S.C.I.A. PER RISTRUTTURAZIONE
EDILIZIA DI IMMOBILE AI FINI
RESIDENZIALI
SEGNALAZIONE DEGLI INTERVENTI
MAGGIO 2025

SCALA 1:100

534 T03

Federico Fontaneto Geometa
Castagno Matteo Geometa
Carpignano Sesia 28064
Via O.F. Mossotti n° 4
tel/fax 0321 825790
port. 348 88 793 88
cell. 348 08 34 062
federico@studiofontaneto.it